



6th – 12th Grade Recreational Rules

Playing Time:

- 6th - 8th: Two 35-Minute Halves
- 9th - 12th: Two 40-Minute Halves

Number of Players: 11 v 11

- Including Goalkeepers
- **Minimum: 7**

Ball Size: 5

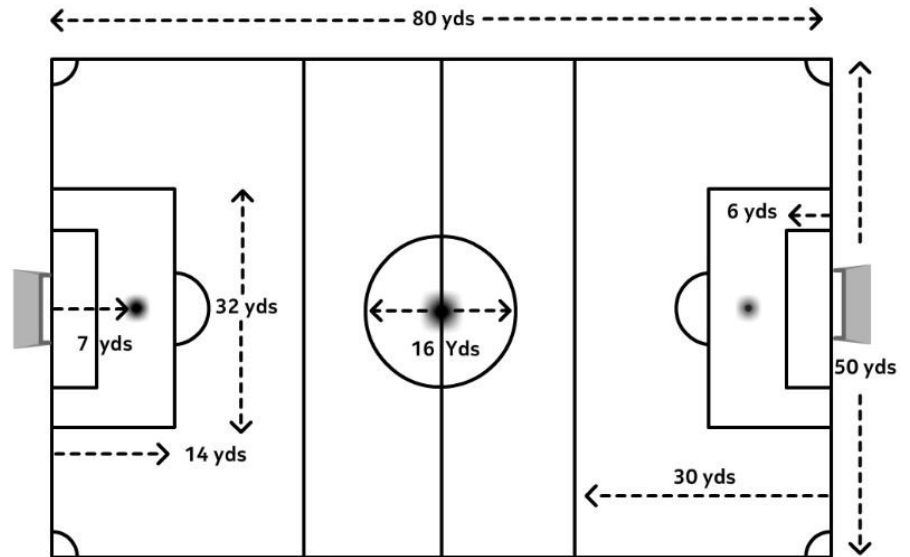
Field Dimensions: 80 yards x 50 yards

Throw – Ins: Yes

Heading: Allowed

Team Area: Between the fields, on the opposite side from the spectators

Referees: Provided by BRSC



The Field

- Dimensions: The field will be approximately 80 yards long and 50 yards wide, with a center circle with an 10 yard radius.
- Goals: Goals will be 7 ft high and 21 ft wide.
- Goal Box: extend 6 yards from the goal line and 6 yards from each goal post.
- Penalty Box: extend 14 yards from the goal line, 14 yards from each goal post.
- Team Area: Both teams must be on the same side of the field, opposite to that of the parents.

The Ball

- A size 5 ball will be provided by the home team.

Number of Players

- Recommended roster maximum per team is 16.
- Maximum number of players per team on the field at one time is 9, including the goalkeeper.
- Minimum number of players per team on the field to start or continue the game is 7. Coaches should loan players to a team that is short of the minimum in order to allow all children to play and have fun!
- Substitutions can be made on any stoppage with the referees permission.

Referees

- A Referee will be provided by BRSC.
- All rule infractions shall be briefly explained to the offending player.

Duration of the Game / Playing Time

- Two equal halves
 - 6th - 8th: Two 35-Minute Halves
 - 9th - 12th: Two 40-Minute Halves
- Half -time must be five (5) minutes.
- Each player **MUST** play a minimum of 50% of the total playing time.

Players' Equipment

- Uniforms: All Players are required to wear the appropriate white (Home) or red (Away) BRSC jerseys at all games from Third Coast Soccer.
- The team listed first on the schedule shall be the home team.
- Players must not use equipment or wear anything dangerous to themselves or another player (No jewelry of any kind).
- Shin guards: Players must wear shinguards covered by long socks.
- Footwear: Soccer cleats are recommended, not required. No shoes with toe cleats (baseball cleats). No metal cleats.

Starting The Game

- A coin toss between both team captains will be conducted by the referee. The team winning the toss shall select which end of the field to defend.
- The team losing the toss shall kick off first.
- A kickoff occurs at the start of each half and after each goal. The opposing team must line up outside the center circle on their half of the field.
- After halftime, the teams change ends and the kickoff is taken by the team who did not take the kickoff at the start of the game.
- A goal cannot be scored directly from kickoff. It must touch another player before entering the goal.
- Restart with a goal kick.

Ball In and Out of Play

- The ball is out of play when it has entirely crossed over the touchline or goal line.
- Play restarts with a throw-in for the other team. Opposing players must be 5 yards away.

Method of Scoring

- The entire ball must travel over the goal line, inside of the goal.

Offside

- Offside will be called using assistant referees.
- No offside directly from a throw-in.
- No offside directly from goal kicks.

Free Kick

- Opponents must be 8 yards away from the ball

Penalty Kick

- Opponents must be 8 yards away from the ball

Goal Kick

- Awarded when the ball has completely crossed the goal line and was last touched by a player on the defending team.

- Goal kicks are taken from the top of the team's goal box.

- The ball must leave the penalty box to be in play
- All opponents must be behind the build out line until the ball is in play.

- A goal may NOT be scored directly from a goal kick.

Corner Kick

- Awarded when the ball has completely crossed the goal line, except through the goal, and was last played or touched by a player of the defending team, it shall be kicked into play from the corner of the field on the same side of the goal on which it went across the goal line by the attacking team.

- Opponents must be 8 yards away from the ball.